

87,70

3880

53,5

CABINA
TUNEL

10,00

15,50

22,85

C

5,10

10,20

15,65

17,15

A

49,15

73,10

12,15

10,85

11,05

17,00

15,20

9,20

B

15,65

35,15

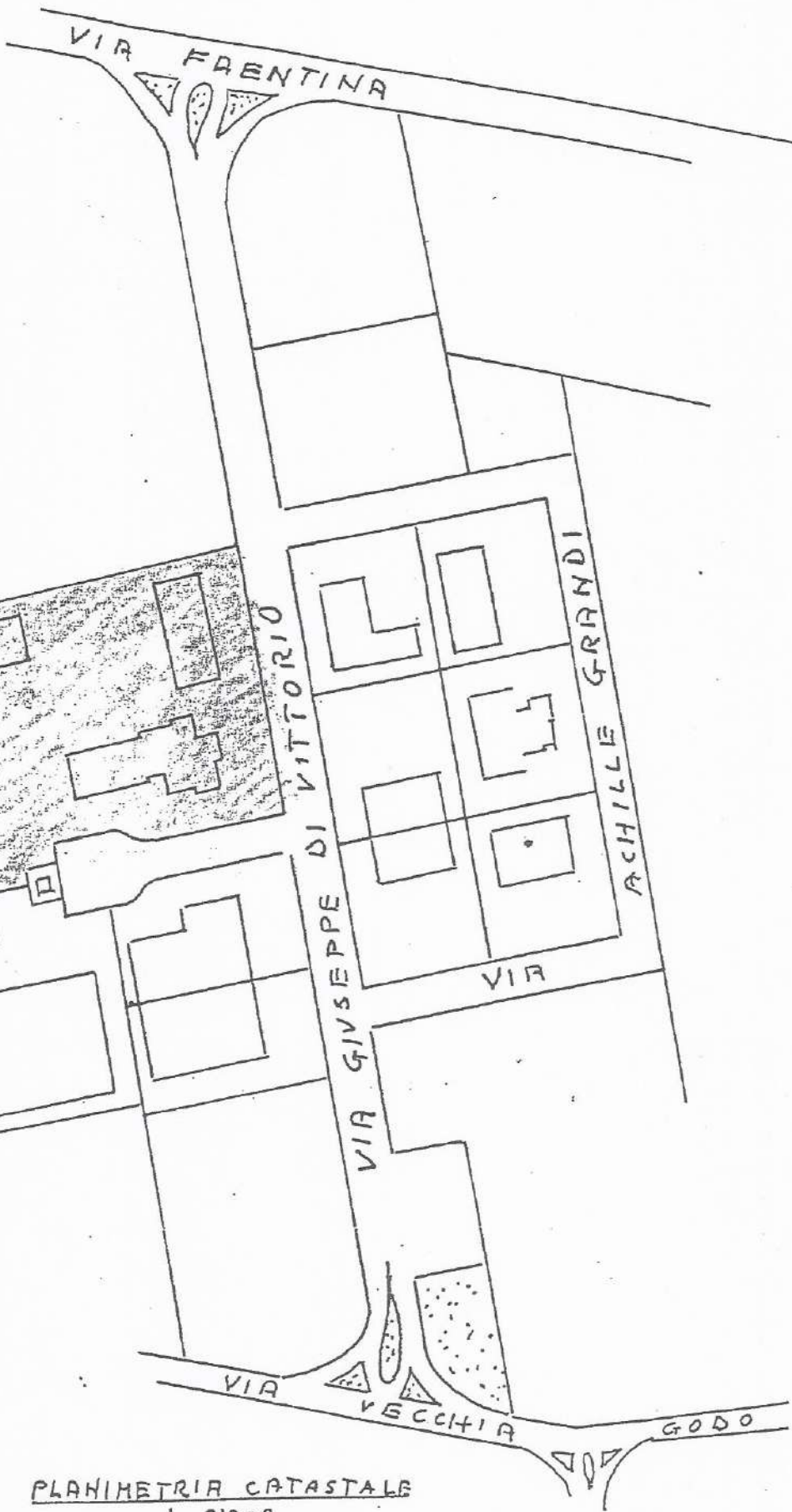
10,20

11,50

72

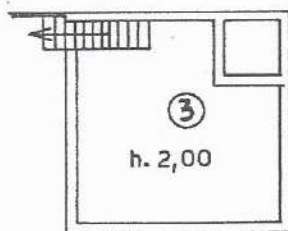
86,80

DI VITTORIO

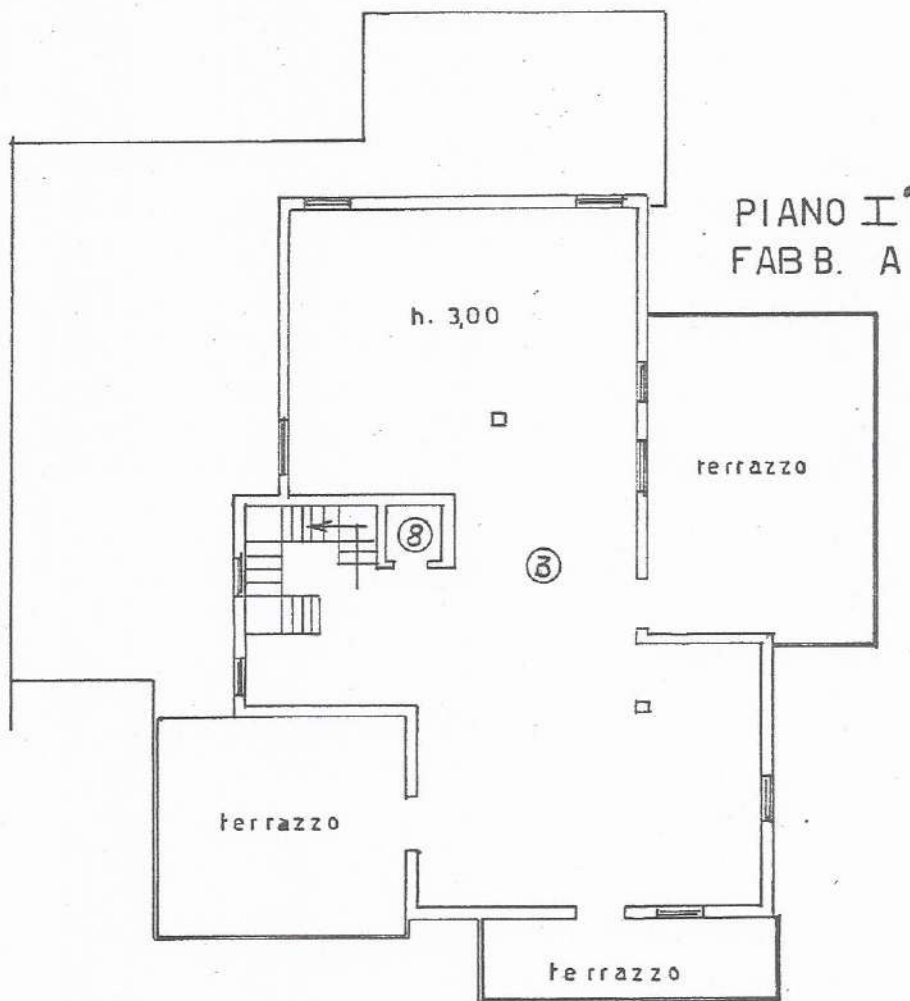


PLANIMETRIA CATASTALE
1:2000

CORPO A
1° PIANO



PIANO I°
SOTTOSTRADA
FABB. A



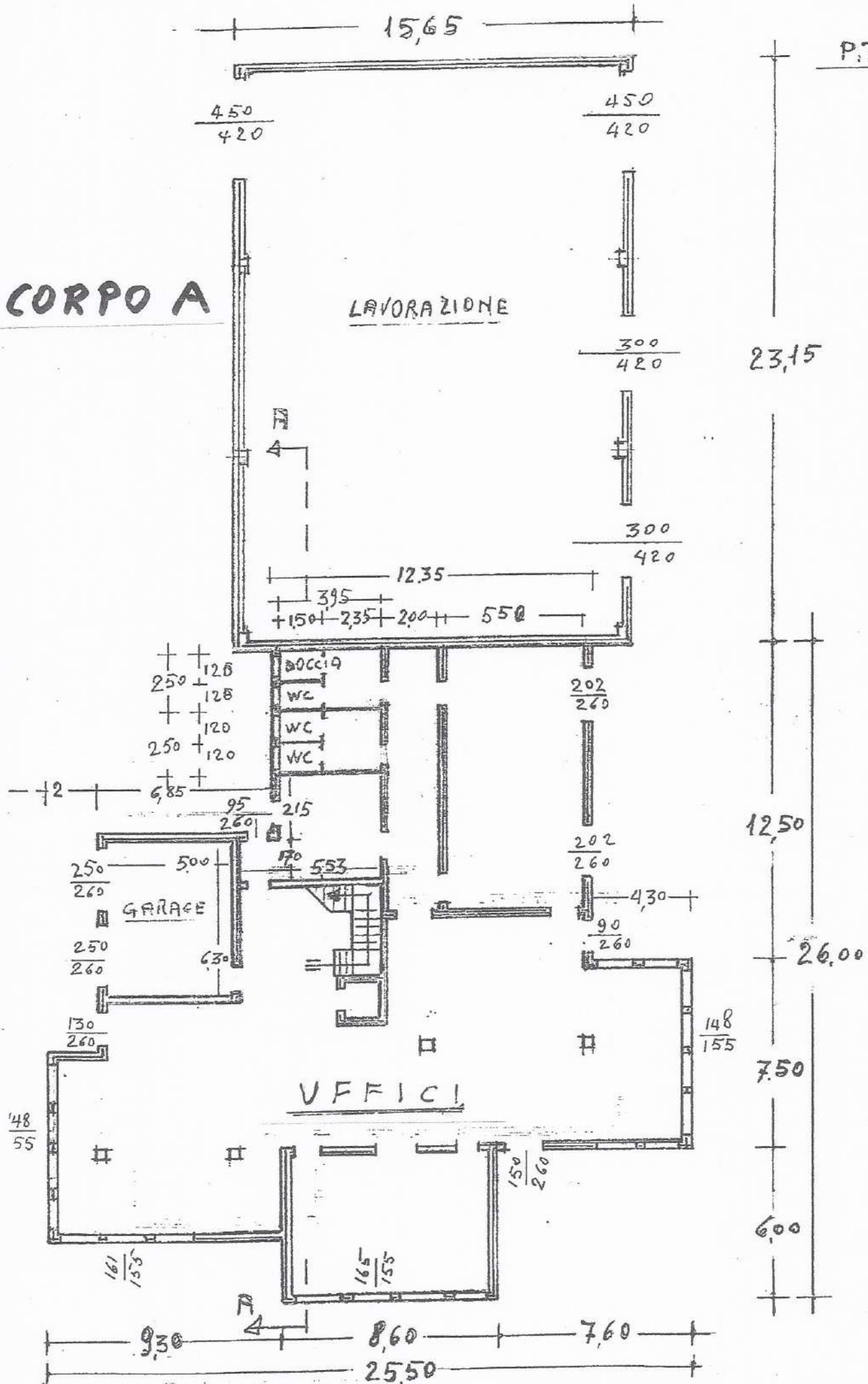
PIANO I°
FABB. A

CORPO A

LAVORAZIONE

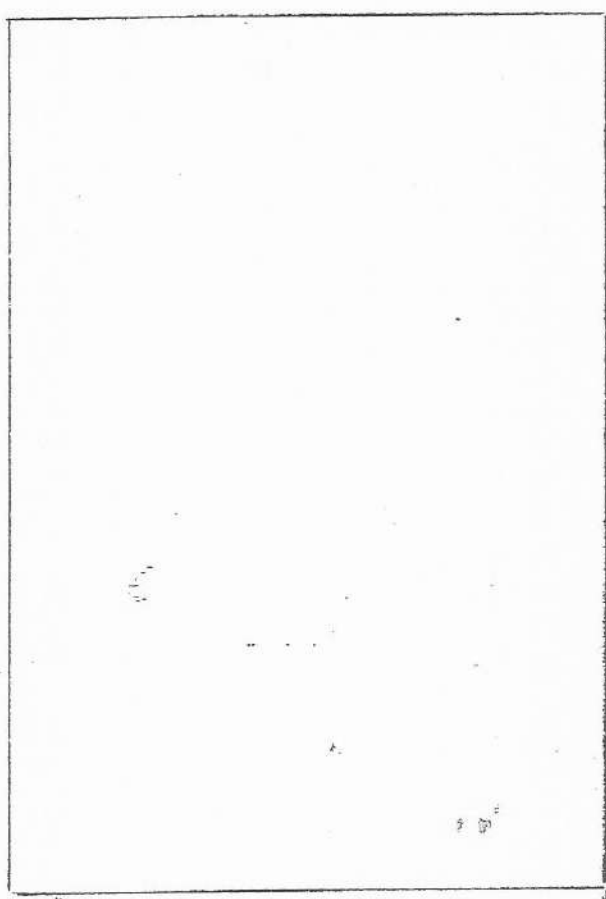
UFFICI

GARAGE



1° P. VARIANTE

CORPO A
1° PIANO



TETTO PIANO

